

# NORTHERN ENGLAND INDEPENDENT CONNECTIVITY COMMISSION

*KEY MESSAGES*

FEBRUARY 2017

BASED ON AN INDEPENDENT REPORT COMMISSIONED BY TRANSPORT FOR THE NORTH

# International connectivity for the North of England

*To build a well-connected North we need to do more than just improve travel within the region. We also need to ensure that the North has easy access to the international connections which will allow it to play a full role on the global stage.*

The Independent International Connectivity Commission was brought together by TfN Chair and former CBI Director-General, John Cridland, to investigate the ways in which the North's connections with the world could be bolstered to support transformational economic growth.

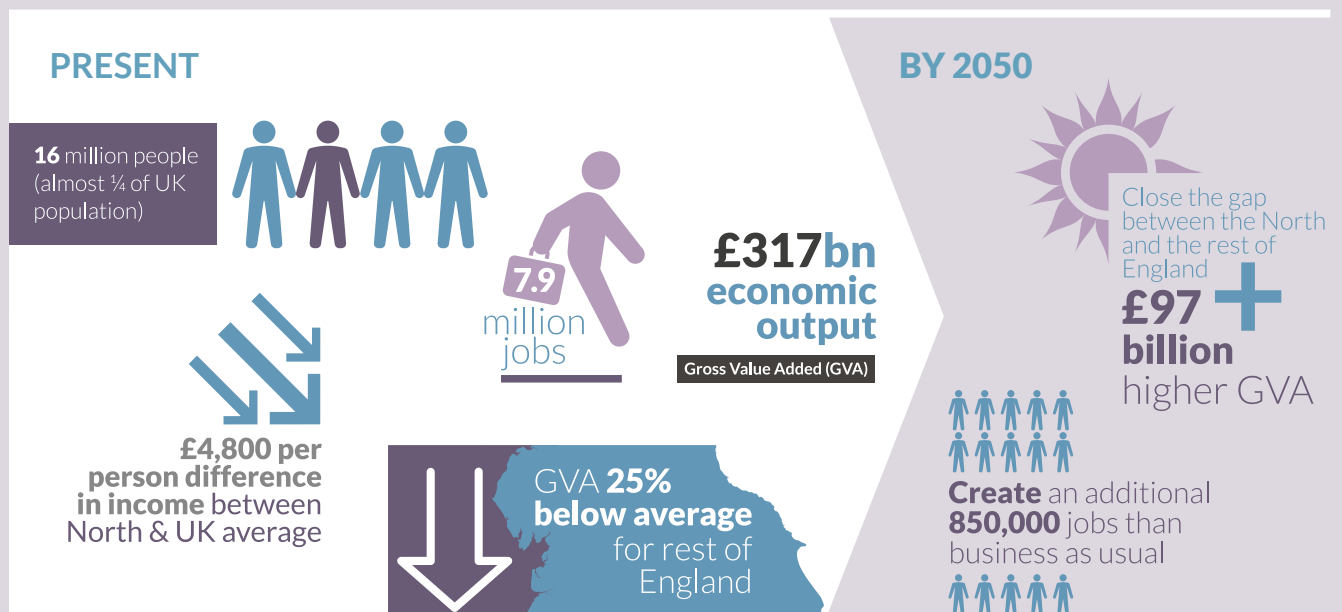
The Commission has found that international connectivity starts on the ground. To ensure that the North has robust and extensive connections to global destinations, the region's airports and ports must be connected to its economic centres with rapid and reliable rail, road and water links.

Strengthening these ground transport connections will make it easier for passengers and freight to enter and leave the region and will in turn drive demand for services to new international destinations. Improved global connectivity should also be supported by increased market intelligence to inform policy development and investment in marketing of the North as a destination of choice.

Increasing the range of destinations and frequency of direct international services to and from the North will boost business efficiency, encourage entrepreneurship, enhance employment opportunities and increase Foreign Direct Investment, inward investment and export opportunities. It will also create conditions which attract and retain top talent and skills. Improving the North's international connectivity will help rebalance the wider UK economy, benefiting the country as a whole.

## Broad economic picture for the North of England

The Northern Powerhouse Independent Economic Review evidenced that, by building on the region's unique capabilities, we can close the persistent economic gap between the North and the rest of England. By investing in world-class transport infrastructure we can help transform the Northern economy. Making it easier, faster and more reliable to move people and goods between the major economic centres of the North will increase access to talented staff, suppliers, collaborators and customers, at home and abroad.



# Northern airports

## Contribution of the North's airports



OVER THE LAST YEAR  
**AIR PASSENGERS**  
FROM THE NORTH INCREASED BY  
**9.1%**

NORTHERN AIRPORTS  
PROVIDE  
30,000  
**FULL**  
TIME JOBS



NORTHERN AIRPORT  
PASSENGERS DIRECTLY  
CONTRIBUTED

**£5.5bn**

1.7% OF THE NORTH'S GVA



### Present

Where we are now

**39.6m**  
AIR PASSENGERS  
PER YEAR FROM  
NORTHERN AIRPORTS

**50%**  
LONG HAUL  
PASSENGERS  
FROM THE NORTH HAD TO  
TAKE CONNECTING FLIGHTS

**11%**  
OF UK AIR FREIGHT IS  
CUSTOMS  
CLEARED IN THE  
**NORTH**

The opportunity

IF THE NORTH  
WAS PERFORMING  
AS IT SHOULD, IT WOULD  
CURRENTLY HAVE  
**4 MILLION MORE**  
AIR PASSENGERS

**+60m**  
THE NORTH HAS  
AIRPORT CAPACITY  
FOR **60 MILLION** MORE  
PASSENGERS ANNUALLY

**BUT ONLY**  
**4%**  
OF UK AIR FREIGHT  
IS FLOWN FROM  
THE NORTH

The future

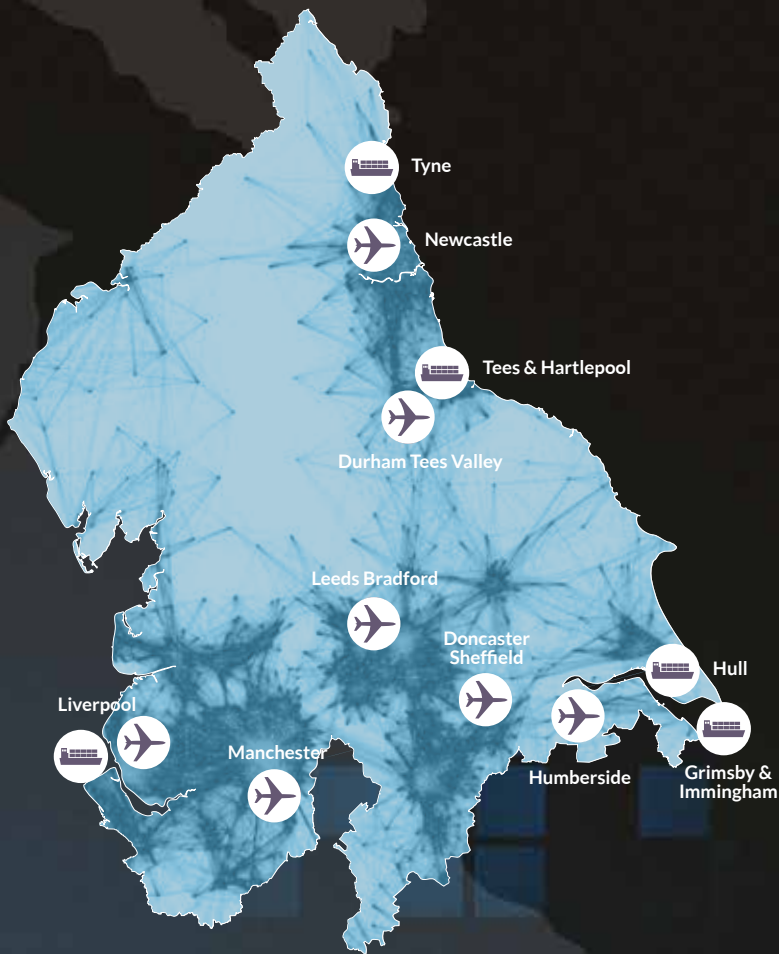
THE NORTH  
SHOULD HAVE  
**75m**  
ANNUAL AIR PASSENGERS

### By 2050

**90%**  
OF LONG-HAUL  
PASSENGERS SHOULD  
BE ABLE TO FLY  
FROM THE NORTH  
DIRECT TO THEIR  
DESTINATION

**ALL AIR  
FREIGHT**  
FROM THE NORTH  
SHOULD BE ABLE  
TO FLY FROM  
THE NORTH

## Northern international hubs



## Northern ports

Investment in the North's freight and logistics will deliver huge employment benefits and improve Gross Value Added to the UK's economy



Website  
[transportforthenorth.com](http://transportforthenorth.com)

Write to  
Transport for the North  
2nd Floor  
4 Piccadilly Place  
Manchester  
M1 3BN

General enquiries  
0161 244 0888

Connect

