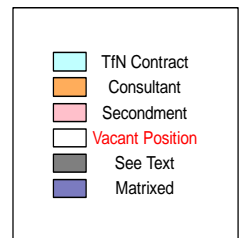
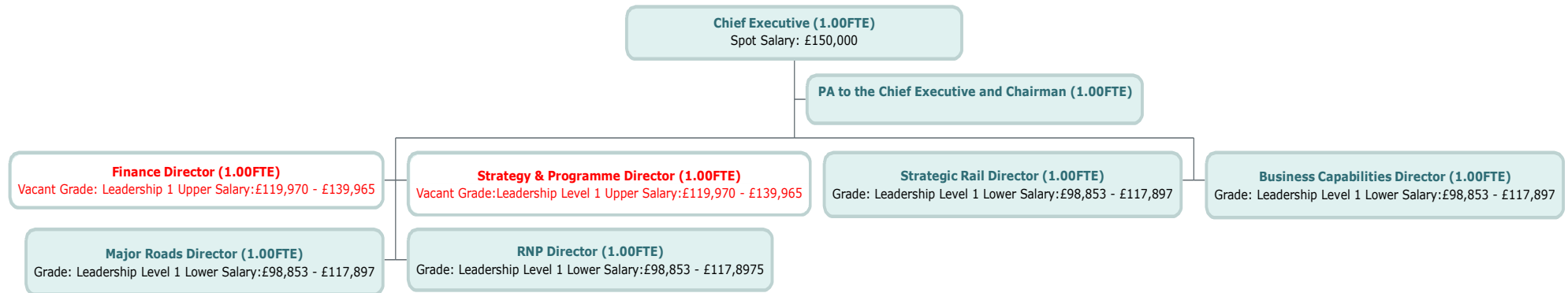


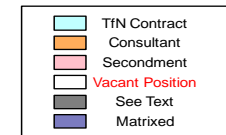
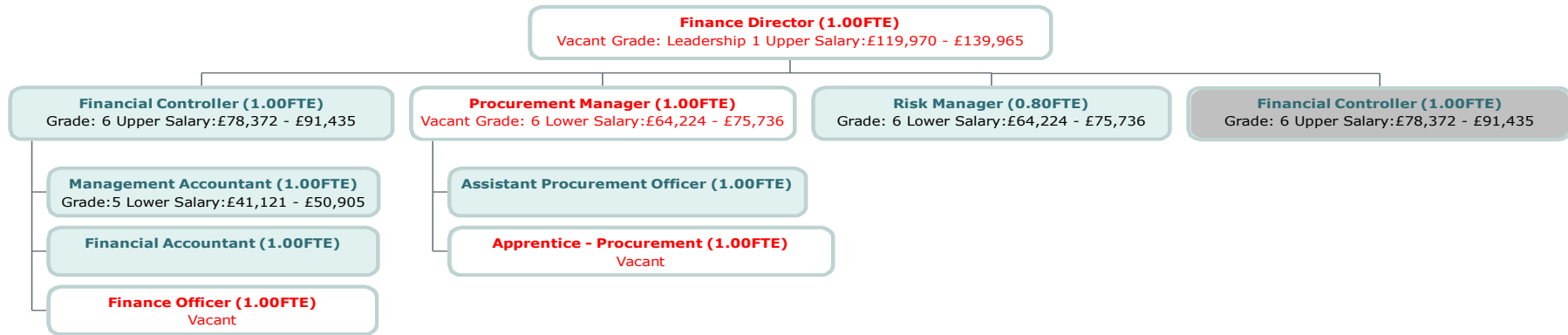
Organisational Structure
(Including salary information for employees
earning at least £50,000 per annum)

As at 31 March 2022

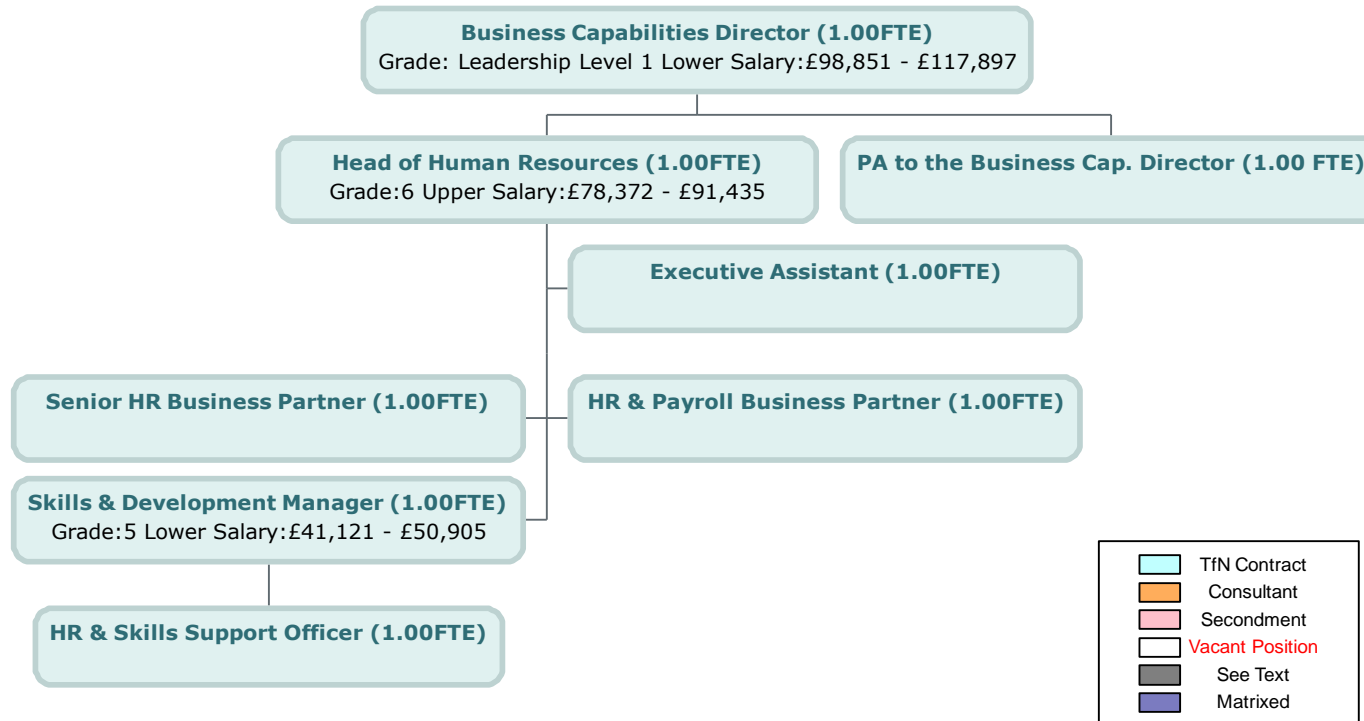
Management Team



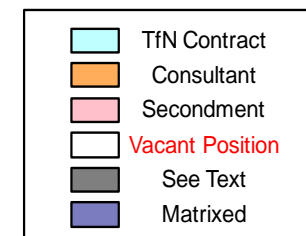
Finance, Procurement & Risk



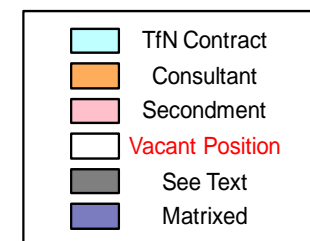
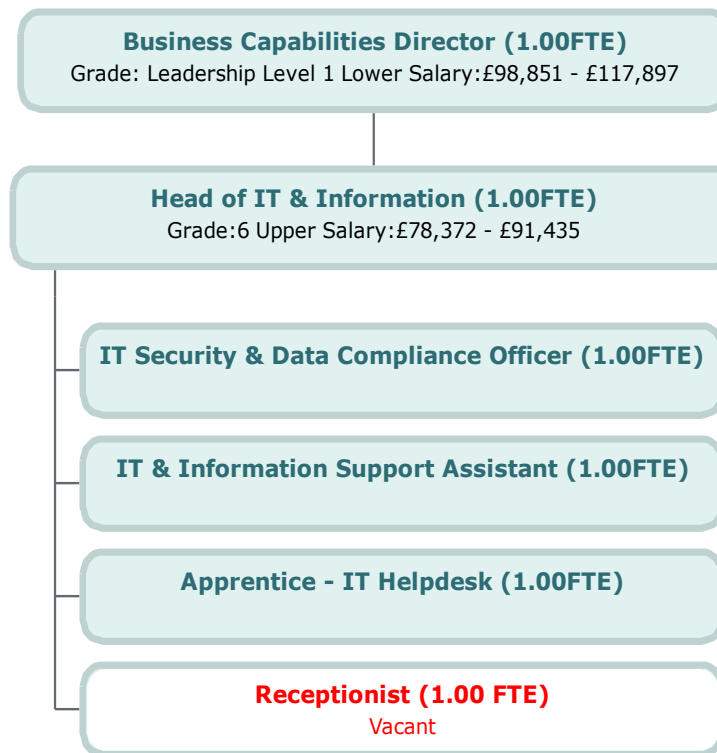
Human Resources & Skills



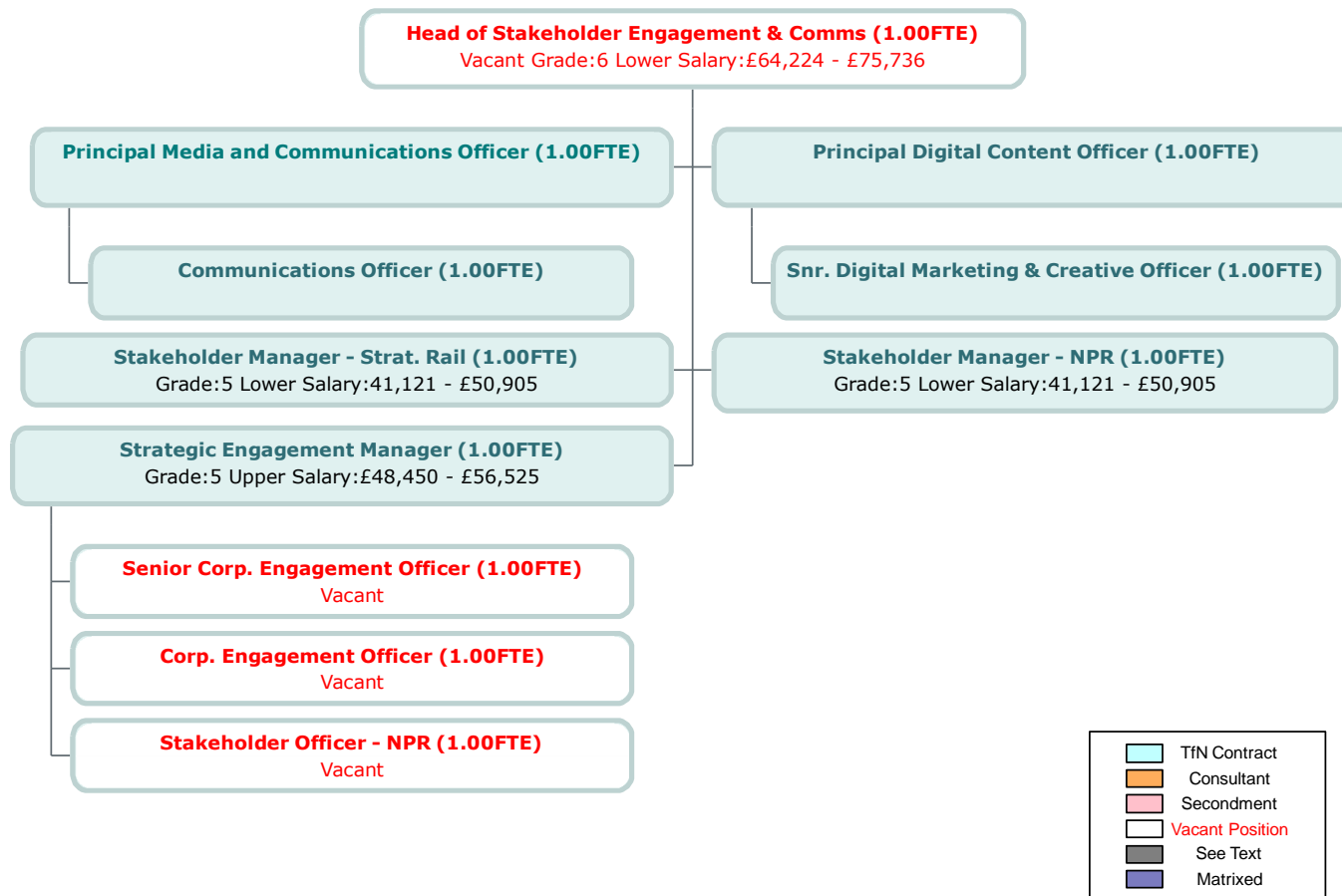
Legal



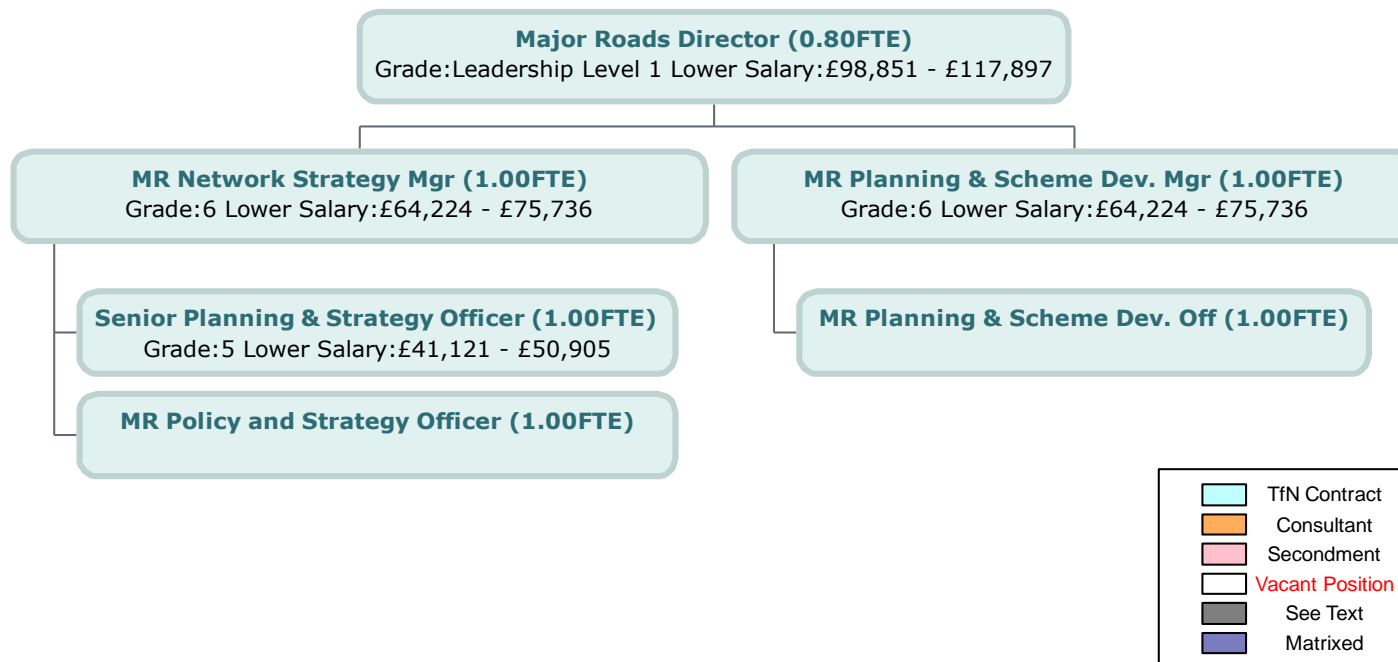
Information Technology



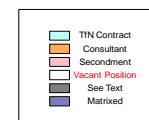
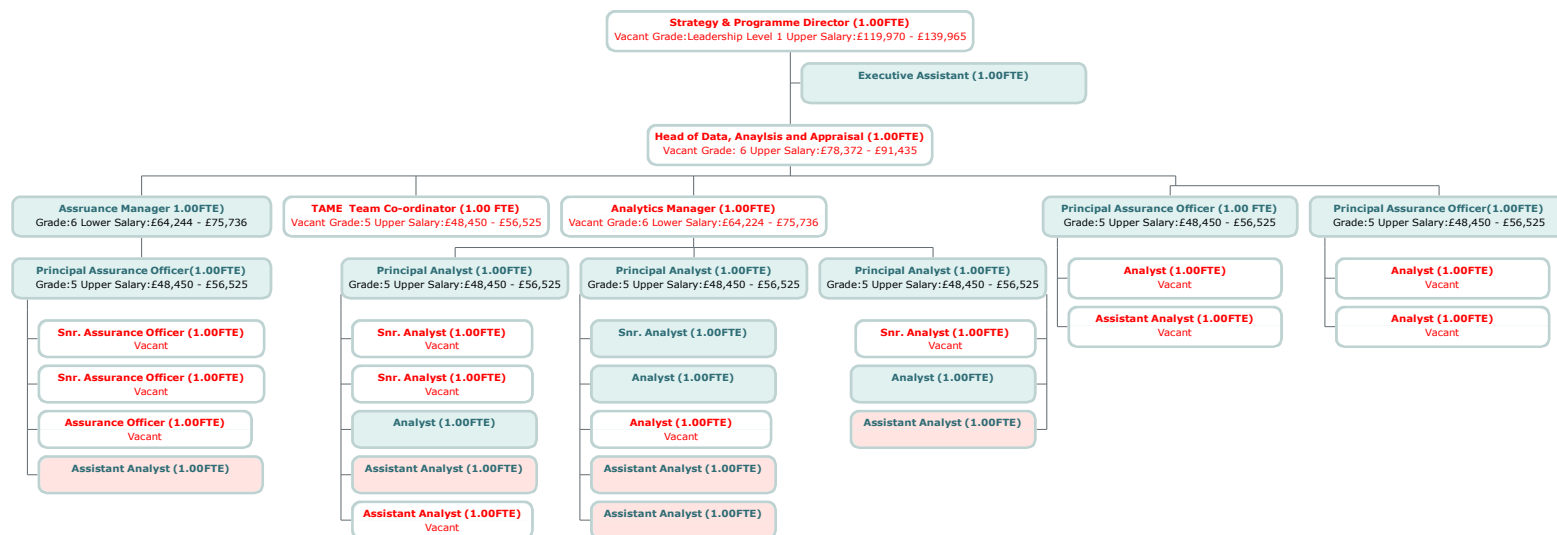
Stakeholder Engagement & Communications



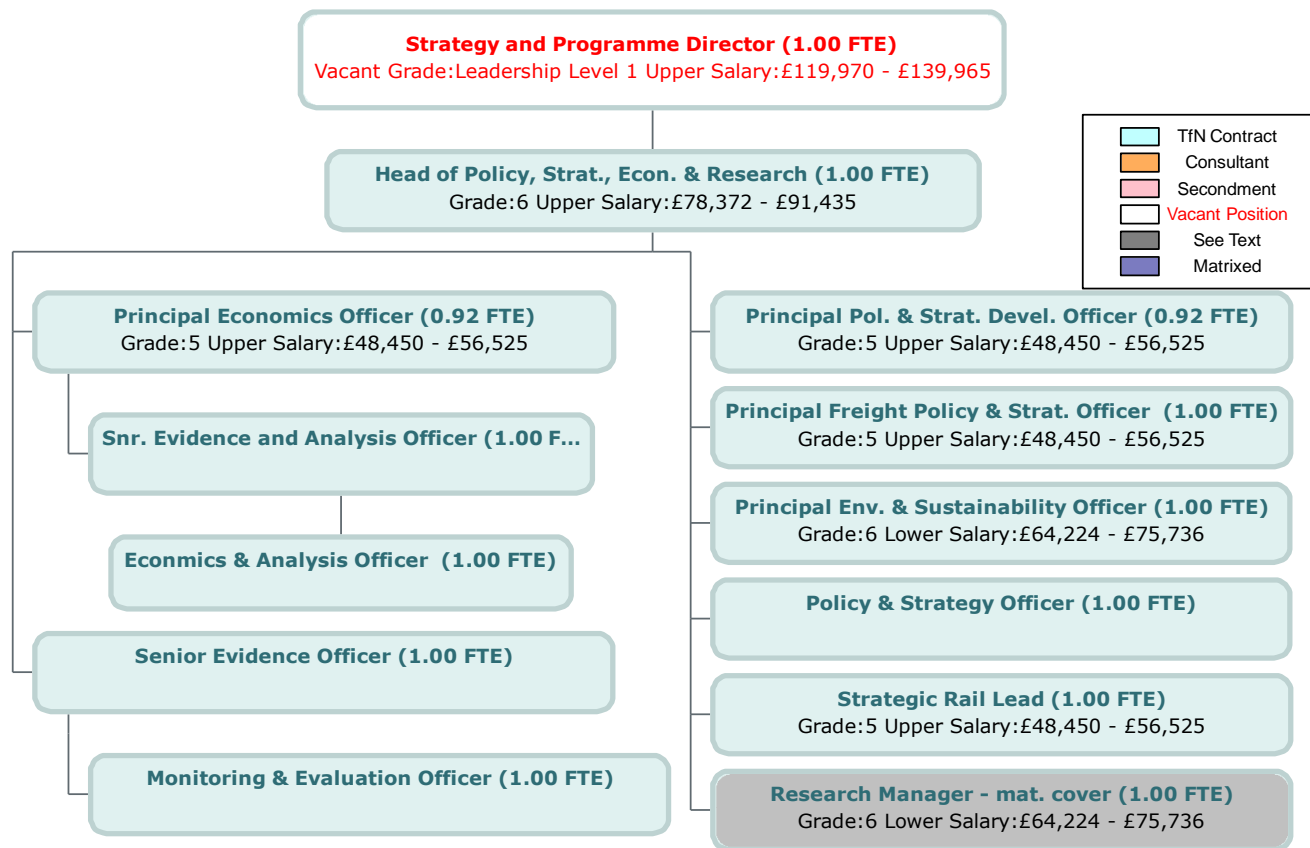
Major Roads Network



Data Analysis & Appraisal









Policy, Strategy, Economics & Research

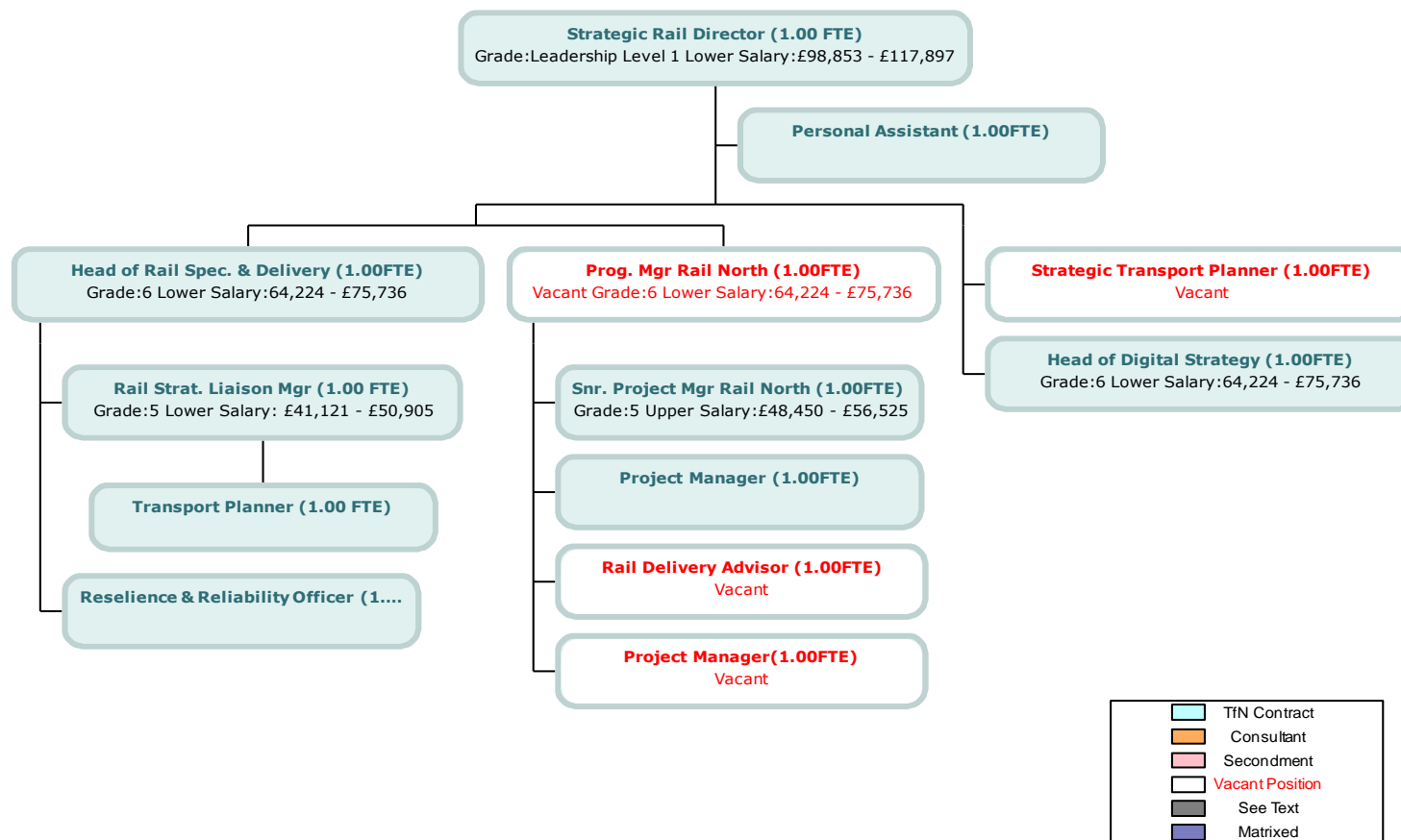


Programme Management Office



| | |
|---|-----------------|
|  | TfN Contract |
|  | Consultant |
|  | Secondment |
|  | Vacant Position |
|  | See Text |
|  | Matrixed |

Strategic Rail



Rail North Partnership

